



INSTALLATION DRAWING

ACO Pty Ltd
1300 765 226
sales@acoaus.com.au

DRG #: IY015

LIPUMAX-G CLASS D (AS 3996) WITH CONCRETE COLLAR
TO SUIT ENGINEERED ASPHALT PAVEMENTS

ACO Limited
0800 448 080
sales@aconz.co.nz

Class D (AS 3996) cover and reinforced concrete collar assembly

Inspection opening

Reinforced cast-in-situ concrete encasement

Vent

Inspection opening / Trade waste sampling point

Asphalt

Compacted sand/soil sections
300mm

100

Concrete or stabilised sand footing
200mm

150mm

∅

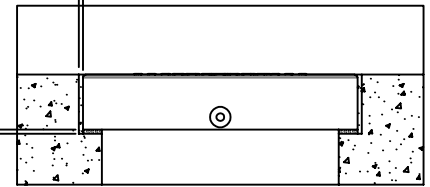
150mm

Angle of excavation to suit site conditions and WHS requirements

Description	∅
Lipumax-G 3000L	2340
Lipumax-G 4000L	2340
Lipumax-G 5000L	2740

15mm high strength non-compressible grout

15mm epoxy sealant



Rebate detail

NOTES:

1. These details only provide a practical reference. ACO recommends designers and installers check local legislative standards and practices, or seek specialised engineering advice.
2. Reinforced cast-in-situ concrete rebate to support and encase the precast collar assembly.

Specification Clause

For adequately reinforced concrete slabs, the grease separator shall be ACO Passavant, Lipumax-G below ground grease separator. The grease separator shall be supplied with a Rhinocast® Class D 210 kN (AS 3996) cover and reinforced concrete collar, part number 142099, riser tube, part number 142350, and installed in an engineered slab detail.

Grease separator shall be supplied and manufactured by ACO and installed in accordance with local codes and Standards.